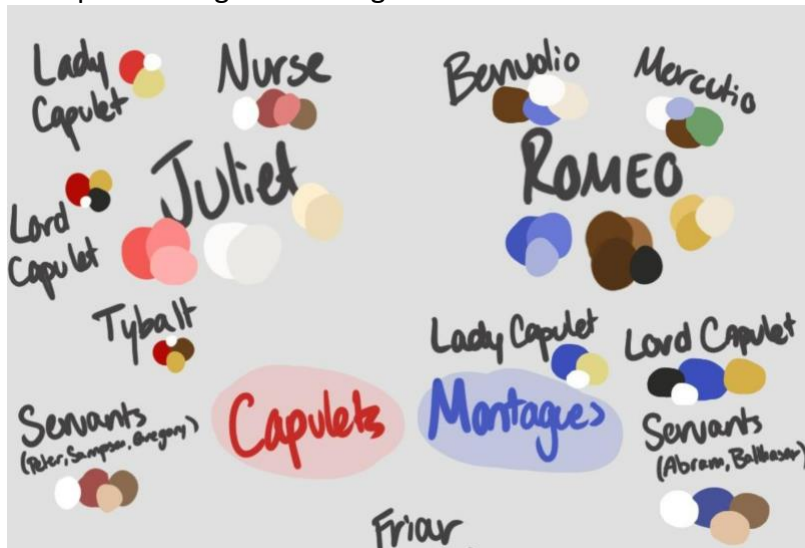
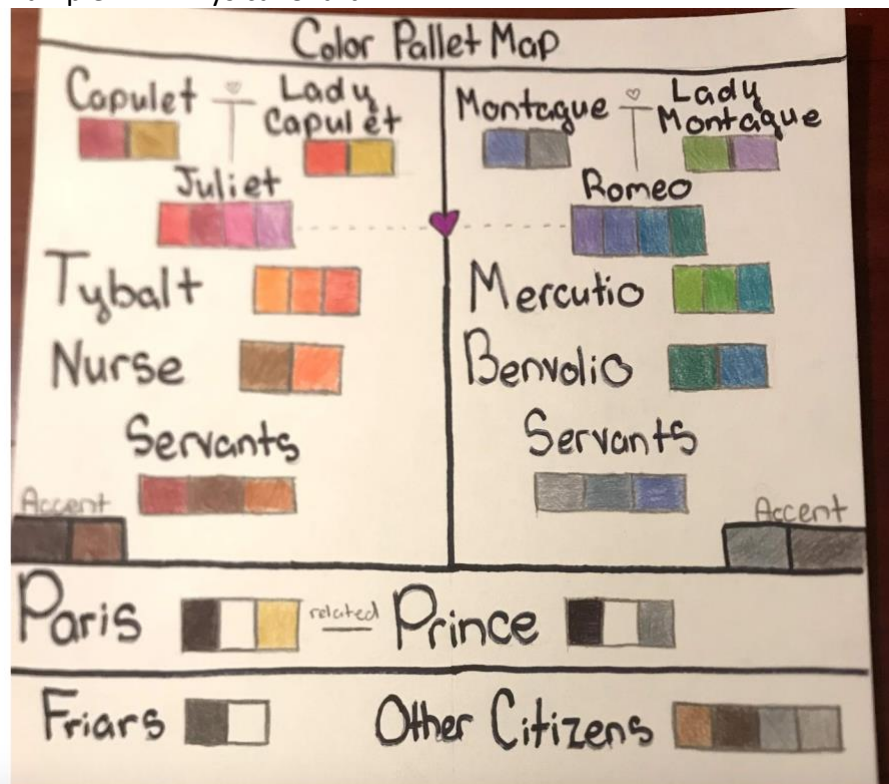


Examples of Color Pallet/Map

Example #1 – Digital Drawing



Example #2 – Physical Chart



Example # 3 – Digital Chart

GROUP	CHARACTER	COLOR
Montague Family/Friends	Romeo	
	Montague	
	Lady Montague	
	Benvolio	
	Mercutio	
Montague Servants	Abram	
	Balthasar	
Connection to Montague	Rosaline	
Capulet Family/Friends	Juliet	
	Capulet	
	Lady Capulet	
	Tybalt	
	Pertuchio	
Capulet Servants	Nurse	
	Peter	
	Sampson	
	Gregory	
	Anthony	
	Potpan	
Conection to Capulet	Count Paris	
	Page	
Neutral	Prince Escalus	
	Friar Laurence	
	Friar John	
	Apothecary	

Examples of Word Maps/ Descriptions

Example #1 - List

JULIET:

Beautiful	Emotional	Luxury
Naive	Natural silk	Short hair
Romantic	Kitten heel	Earrings
Headstrong	Round toe	Pearls
Courageous	Simple jewelry	Small watch
Intelligent	Minimal	V neckline
Impetuous	Light, airy fabric	Midi-length dress
Bright eyes	Flowy	Shawl
Pink	Sleeveless	

Example #2 – Bullet Points

1780's America Romeo and Juliet

Part 3 - Costume Description/Research

Descriptions

MONTAGUES

- More down-to-earth, "grassroots", but definitely still high-class citizens
- More connected to America than Britain, so clothing styles will not be as ornate and decorative
- Clothing styles likely drawn from styles made popular during/after colonization
- Leathers and wools, heavier materials?
- BLUE IS DOMINANT COLOR → higher up members of family have more saturated shades, shades become lighter/desaturated as family members descend (i.e. lord/lady have most saturated blues, Benvolio/servants have less saturated hues)
- **ROMEO**
 - o For fashion, think Marius Pontmercy from Les Mis: He's a high-society rich boy who wants to be "of the people"
 - o Lots of brown, blue is mostly an accent color, still has shiny buckles on his shoes
 - o Does not wear a wig, even in fancier/more elite events (masquerade, dinners, etc.), instead lets his hair grow out to match the style naturally
 - o Probably wears a tricorn for the drama of it

CAPULETS

- Definitely wear their wealth, all of their fashion choices are meant to convey their connection to Britain
- Clothing is more embellished and complex, if not outdated slightly in its extravagance
- Cottons, silks
- RED IS DOMINANT COLOR → same deal as Montagues with regards to color saturation
- **JULIET**
 - o Dressed in very fine clothing, almost like a doll being paraded for others
 - o Robe a l'Anglaise style dresses, predominantly white with pink, red, and gold accents

Example #3 - List

Word Map

<u>Color</u>	<u>Fabric</u>	<u>Etc</u>
Warm	Texture	Romantic
Cool	Rough	Modest
Neutral	Soft	Love
Pastel	Smooth	Youth
Soft	Silk	Free
Complimentary	Wool	Constrained
Color Wheel	Cotton	Challenged
Cool Neutral	Layers	Fight
Warm Neutral	Sheer	Beauty
Blue	Mesh	Darkness
Purple	Velvet	Sad
Yellow	Crushed	Mourning
Red	Flowy	Scruffy
Brown		Handsome
Monochrome		Shock
		Naive
		Values
		Family
		Feud
		Growth

Example #4 – Short Sentences

Juliet

Personality: she is bright and optimistic. She has an open mind and doesn't hate the Montagues the way her family does. She is also very loyal to her family, causing her to be confused about her beliefs. She is a modern woman who really wants to make something of herself, but she is also very open to the idea of love.

Physical Traits: She is white with short brown hair that she wears in a ponytail. She is of average height and has a slender build.

Emotion: This play is an emotional roller coaster for her, but the emotion that defines her throughout the play is love. She doesn't try to fight it, but instead lets it sweep her away, for better or worse.

Color: Her color scheme consists of red, pink, and purple. She is the only person in her family to wear purple to show that while she loves her family, she is still different from them.

Mood: I really want her clothing to scream modern while also showcasing her femininity. This costume also needs to showcase her innocence, which is why she wears pink, to show her passion mixed with innocence.

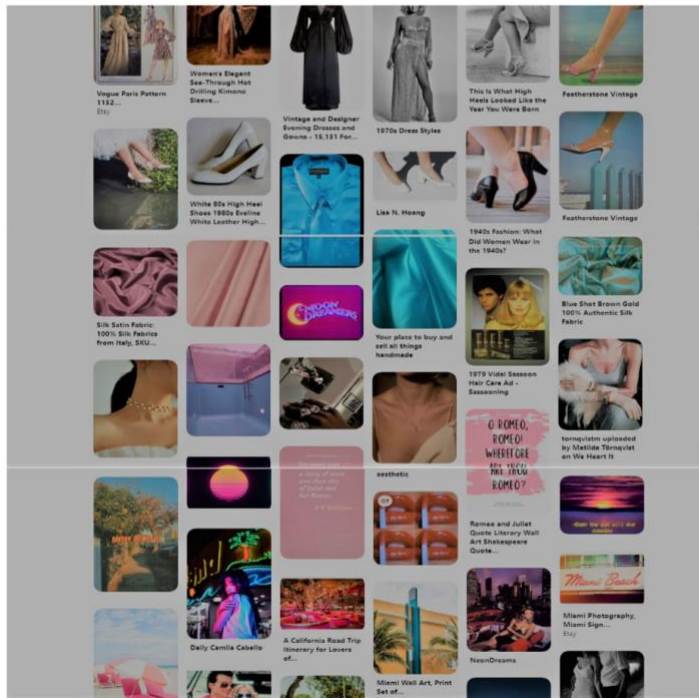
Texture: this is a tight-fitting costume, so the texture comes from the pattern of the fabric and the accessories

Fabric: I want her fabric to be light and practical for Florida. Her top will be a light, cotton fabric and her pants/shorts will be a slightly thicker fabric with a printed or woven design. I want plaid fabric to be utilized in both Romeo and Juliet's costumes.

Style: the style of this costume is modern and feminine. It would consist of patterned pants, a tight-fitting top, and some brightly colored sneakers.

Example #1 -Screen Shot of Her Pinterest Board

Romeo and Juliet
Costume Research / Design
MIAMI 1980



Example #2 – Word Document

Research Collage

ROMEO



(this is technically 19th century fashion but it's the vibe we're looking for)



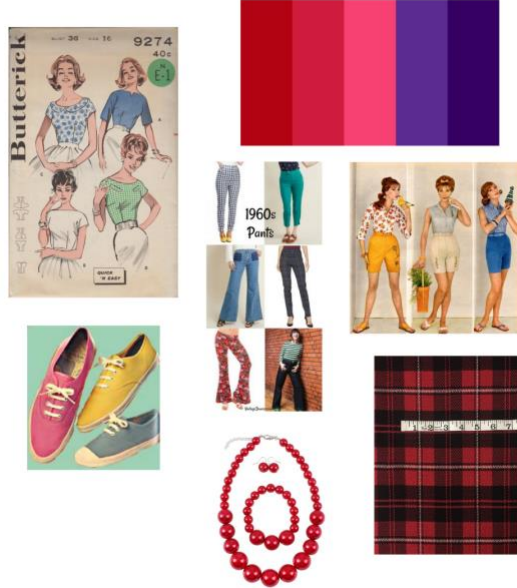
(Maybe he has patterns on his vests still showing elite status but subtly)

JULIET

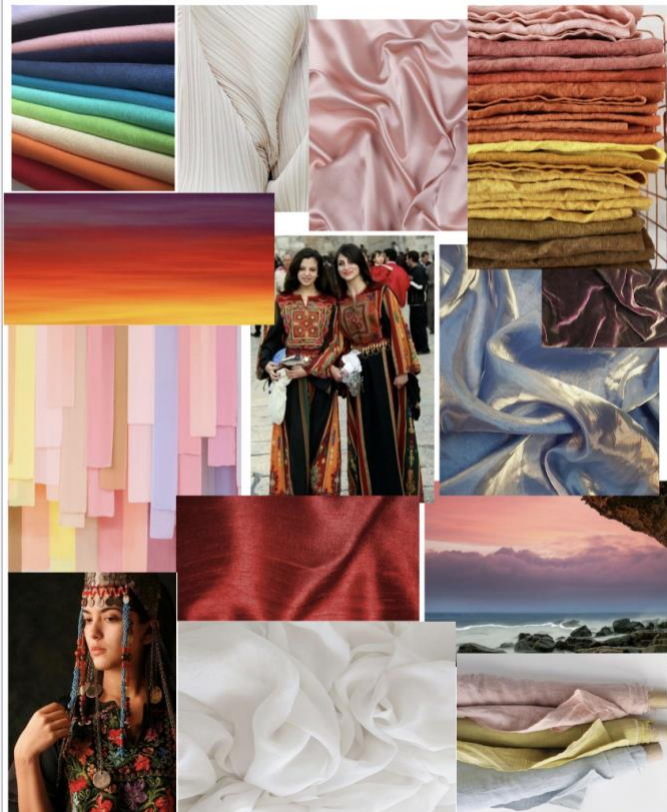
(These are mostly pink, but darker pinks/reds would work



Example #3 – Word Document



Example #4 – Digital Research Collage



Examples of Renderings



JULIET:

